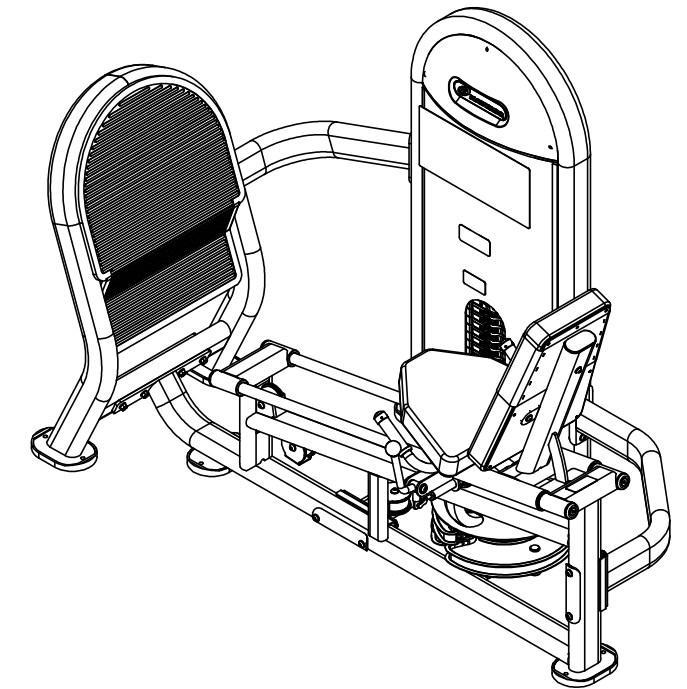
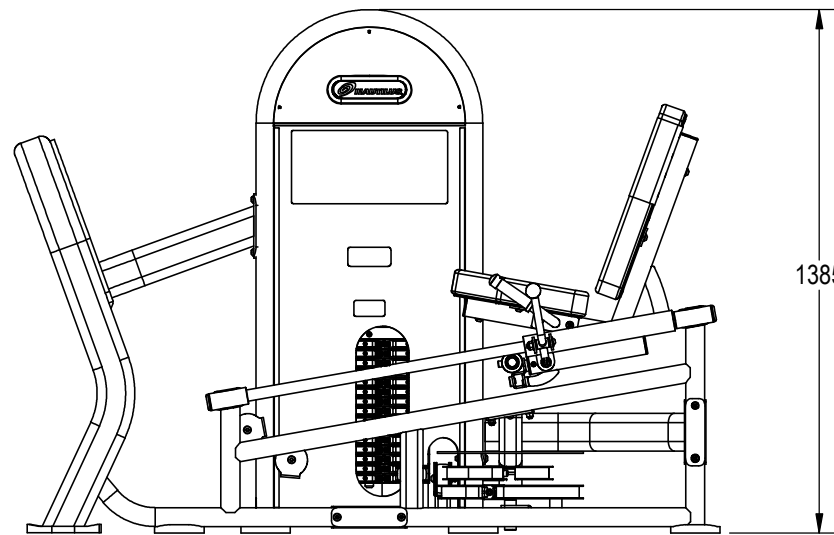
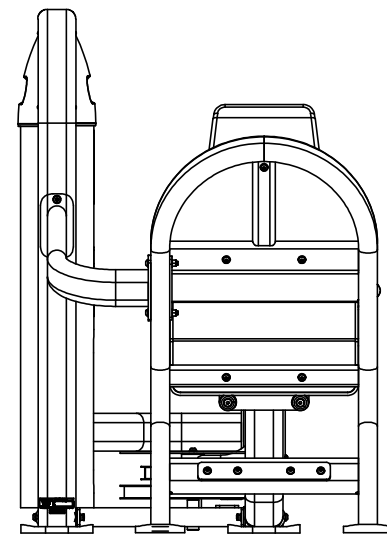
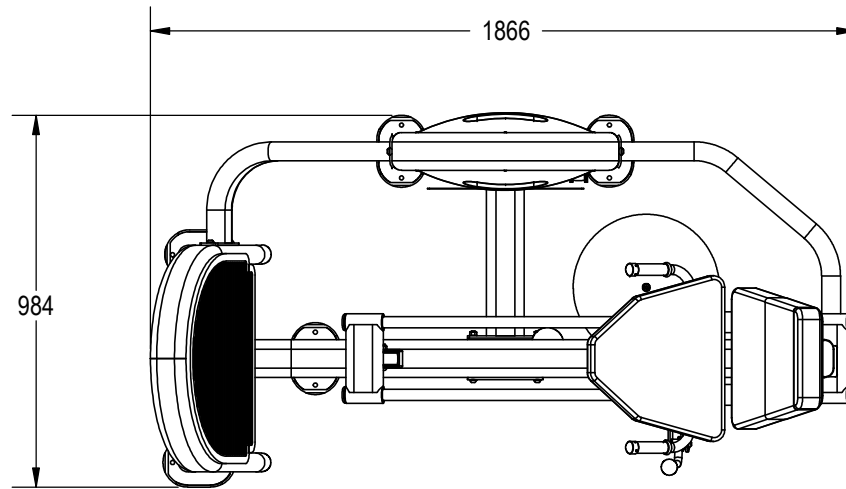


NOTES:

1. ASSEMBLE AND INSPECT PER SOP 620-7918..
2. INSTALL Kg STICKER AND AFFIX Lb STICKER TO INSIDE OF SHROUD WITH TAPE.
3. COLOR DICTATED BY THE SALES ORDER. REFERENCE THE MACHINES BOM FOR COMPONENTS CONTAINING -XX, -00XX AND -XXXX.
  - a. COLOR: -XX COLOR DESIGNATOR AS SPECIFIED IN SOP 620-8222.
  - b. THE -XX CAN RESULT IN ONE COLOR FOR THE METAL SHROUD AND A DIFFERENT COLOR FOR THE METAL FRAME ALSO WITH A -XX LISTED ON THE BOM.
  - c. THE -00XX IS THE COLOR DESIGNATOR FOR UPHOLSTERY.
  - d. THE 5TH DESIGNATOR: "X" WITHIN -XXXXX DEFINES THE HEAD STRAP OR CUSTOM PRODUCTS BRAND. THIS IS SPECIFIED ON SALES ORDERS.
  - e. THE -XXXXX IS CREATED BY COMBINING THE -XX, -00XX AND THE 5TH DESIGNATOR.
  - f. ALL X'S SHOULD BE DEFINED ON THE SALES ORDER.

REVISION HISTORY

REV	DATE	DESCRIPTION	ECO	BY
A	7/21/2016	INITIAL RELEASE	15465	AM



DOCUMENT STATUS:

NOTICE OF PROPRIETARY INFORMATION

THIS DOCUMENT SHALL NOT BE REPRODUCED NOR SHALL THE INFORMATION CONTAINED HEREIN BE USED BY OR DISCLOSED TO OTHER EXCEPT AS EXPRESSLY AUTHORIZED BY CORE HEALTH & FITNESS, LLC.

CLASS OF WORK	UNLESS OTHERWISE SPECIFIED DIMS ARE IN mm. TOLERANCES FOR MEASURE OF LENGTH ARE:							ANGLES = ±2°
	0.5 to 3	>3 to 6	>6 to 30	>30 to 120	>120 to 400	>400 to 1000	>1000 to 2000	
FINE	±0.05	±0.05	±0.1	±0.15	±0.2	±0.3	±0.5	----
MEDIUM <b>X</b>	±0.1	±0.1	±0.2	±0.3	±0.5	±0.8	±1.2	±2
COARSE	±0.2	±0.3	±0.5	±0.8	±1.2	±2	±3	±4
VERY COARSE	----	±0.5	±1	±1.5	±2.5	±4	±6	±8

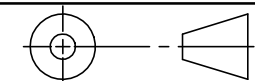
MATERIAL  
SEE BOM

FINISH  
SEE NOTES

VENDOR: **N/A**

P/N: **N/A**

THIRD ANGLE PROJECTION



	INITIAL	DATE
DRAWN	AM	07/21/16
CHECKED		
APPROVED		

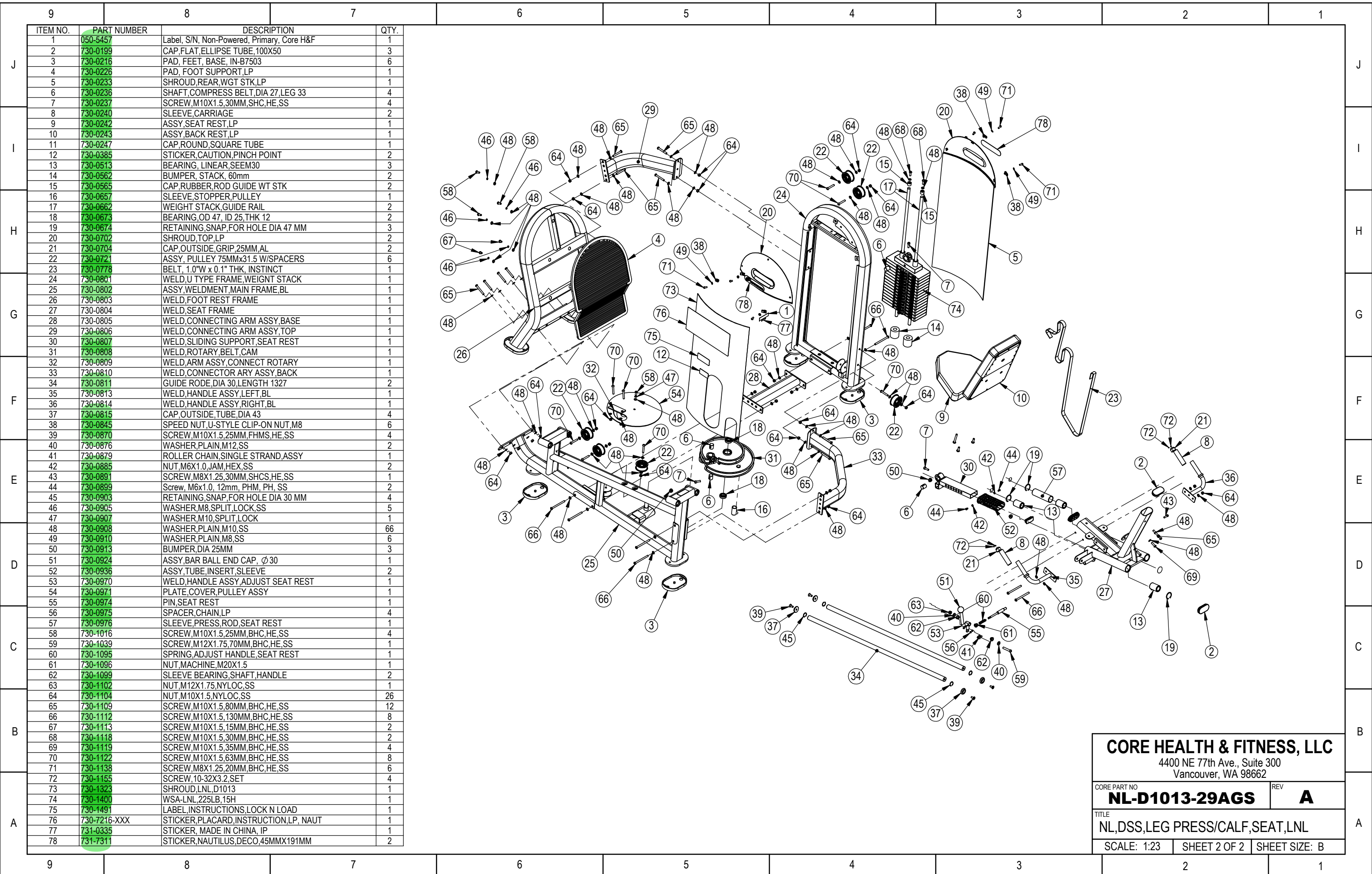
CORE HEALTH & FITNESS, LLC

4400 NE 77th Ave., Suite 300  
Vancouver, WA 98662

CORE PART NO  
**NL-D1013-29AGS** REV **A**

TITLE  
NL,DSS,LEG PRESS/CALF,SEAT,LNL

SCALE: 1:20 SHEET 1 OF 2 SHEET SIZE: B



ITEM NO.	PART NUMBER	DESCRIPTION	QTY.
1	050-5457	Label, S/N, Non-Powered, Primary, Core H&F	1
2	730-0199	CAP,FLAT,ELLIPSE TUBE,100X50	3
3	730-0216	PAD, FEET, BASE, IN-B7503	6
4	730-0226	PAD, FOOT SUPPORT,LP	1
5	730-0233	SHROUD,REAR,WGT STK,LP	1
6	730-0236	SHAFT,COMPRESS BELT,DIA 27,LEG 33	4
7	730-0237	SCREW,M10X1.5,30MM,SHC,HE,SS	4
8	730-0240	SLEEVE,CARRIAGE	2
9	730-0242	ASSY,SEAT REST,LP	1
10	730-0243	ASSY,BACK REST,LP	1
11	730-0247	CAP,ROUND,SQUARE TUBE	1
12	730-0385	STICKER,CAUTION,PINCH POINT	2
13	730-0513	BEARING, LINEAR,SEEM30	3
14	730-0562	BUMPER, STACK, 60mm	2
15	730-0565	CAP,RUBBER,ROD GUIDE WT STK	2
16	730-0657	SLEEVE, STOPPER,PULLEY	1
17	730-0662	WEIGHT STACK,GUIDE RAIL	2
18	730-0673	BEARING,OD 47, ID 25,THK 12	2
19	730-0674	RETAINING SNAP, FOR HOLE DIA 47 MM	3
20	730-0702	SHROUD, TOP, LP	2
21	730-0704	CAP, OUTSIDE, GRIP, 25MM, AL	2
22	730-0721	ASSY, PULLEY 75MMx31.5 W/SPACERS	6
23	730-0778	BELT, 1.0"W x 0.1" THK, INSTINCT	1
24	730-0801	WELD,U TYPE FRAME,WEIGNT STACK	1
25	730-0802	ASSY,WELDMENT,MAIN FRAME,BL	1
26	730-0803	WELD,FOOT REST FRAME	1
27	730-0804	WELD,SEAT FRAME	1
28	730-0805	WELD,CONNECTING ARM ASSY,BASE	1
29	730-0806	WELD,CONNECTING ARM ASSY, TOP	1
30	730-0807	WELD,SLIDING SUPPORT,SEAT REST	1
31	730-0808	WELD,ROTARY,BELT,CAM	1
32	730-0809	WELD,ARM ASSY,CONNECT ROTARY	1
33	730-0810	WELD,CONNECTOR ARY ASSY,BACK	1
34	730-0811	GUIDE RODE,DIA 30,LENGTH 1327	2
35	730-0813	WELD,HANDLE ASSY,LEFT,BL	1
36	730-0814	WELD,HANDLE ASSY,RIGHT,BL	1
37	730-0815	CAP,OUTSIDE,TUBE,DIA 43	4
38	730-0845	SPEED NUT,U-STYLE CLIP-ON NUT,M8	6
39	730-0870	SCREW,M10X1.5,25MM,FHMS,HE,SS	2
40	730-0876	WASHER,PLAIN,M12,SS	4
41	730-0879	ROLLER CHAIN,SINGLE STRAND,ASSY	1
42	730-0885	NUT,M6X1.0,JAM,HEX,SS	2
43	730-0891	SCREW,M8X1.25,30MM,SHCS,HE,SS	1
44	730-0899	Screw,M6x1.0, 12mm, PHM, PH, SS	2
45	730-0903	RETAINING,SNAP, FOR HOLE DIA 30 MM	4
46	730-0905	WASHER,M8,SPLIT,LOCK,SS	5
47	730-0907	WASHER,M10,SPLIT,LOCK	1
48	730-0908	WASHER,PLAIN,M10,SS	66
49	730-0910	WASHER,PLAIN,M8,SS	6
50	730-0913	BUMPER,DIA 25MM	3
51	730-0924	ASSY,BAR BALL, END CAP, Ø30	1
52	730-0936	ASSY,TUBE,INSERT,SLEEVE	2
53	730-0970	WELD,HANDLE ASSY,ADJUST SEAT REST	1
54	730-0971	PLATE,COVER,PULLEY ASSY	1
55	730-0974	PIN,SEAT REST	1
56	730-0975	SPACER,CHAIN,LP	4
57	730-0976	SLEEVE,PRESS,ROD,SEAT REST	1
58	730-1016	SCREW,M10X1.5,25MM,BHC,HE,SS	4
59	730-1039	SCREW,M12X1.75,70MM,BHC,HE,SS	1
60	730-1095	SPRING,ADJUST HANDLE,SEAT REST	1
61	730-1096	NUT,MACHINE,M20X1.5	1
62	730-1099	SLEEVE BEARING,SHAFT,HANDLE	2
63	730-1102	NUT,M12X1.75,NYLOC,SS	1
64	730-1104	NUT,M10X1.5,NYLOC,SS	26
65	730-1109	SCREW,M10X1.5,80MM,BHC,HE,SS	12
66	730-1112	SCREW,M10X1.5,130MM,BHC,HE,SS	8
67	730-1113	SCREW,M10X1.5,15MM,BHC,HE,SS	2
68	730-1118	SCREW,M10X1.5,30MM,BHC,HE,SS	2
69	730-1119	SCREW,M10X1.5,35MM,BHC,HE,SS	4
70	730-1122	SCREW,M10X1.5,63MM,BHC,HE,SS	8
71	730-1138	SCREW,M8X1.25,20MM,BHC,HE,SS	6
72	730-1155	SCREW,10-32X3.2,SET	4
73	730-1323	SHROUD,LNL,D1013	1
74	730-1400	WSA-LNL,225LB,15H	1
75	730-1491	LABEL,INSTRUCTIONS,LOCK N LOAD	1
76	730-7216-XXX	STICKER,PLACARD,INSTRUCTION,LP, NAUT	1
77	731-0335	STICKER,MADE IN CHINA, IP	1
78	731-7311	STICKER,NAUTILUS,DECO,45MMX191MM	2

<b>CORE HEALTH &amp; FITNESS, LLC</b>		
4400 NE 77th Ave., Suite 300 Vancouver, WA 98662		
CORE PART NO	REV	
<b>NL-D1013-29AGS</b>	<b>A</b>	
TITLE <b>NL,DSS,LEG PRESS/CALF,SEAT,LNL</b>		
SCALE: 1:23	SHEET 2 OF 2	SHEET SIZE: B